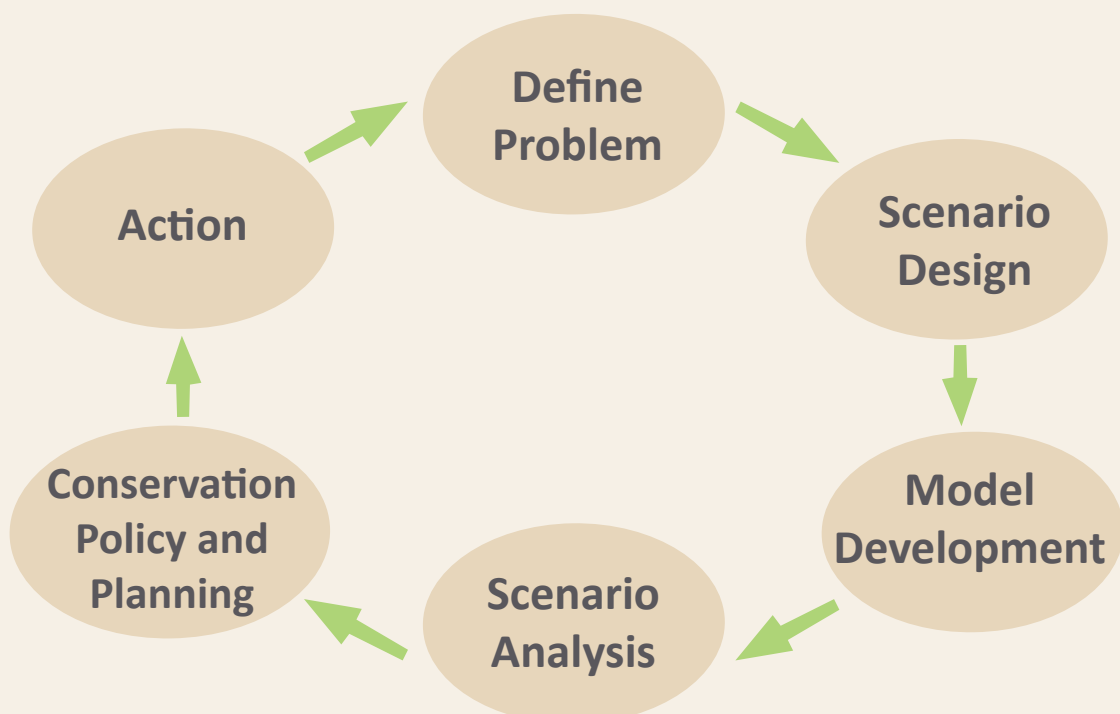


Ridge to Reef Approach: Testing Spatial Prioritization in Tropical Island settings



Support Collaborative Decision Making and Management

- Prioritize conservation areas at the national-scale that can benefit both terrestrial & marine environments
- Support local decision making by testing policy actions & estimating potential outcomes prior to implementation
- Provide information to foster dialogue between decision-makers
- Supports an iterative decision making process



Benefits of R2R approach Vanuatu Spatial Prioritization Trial

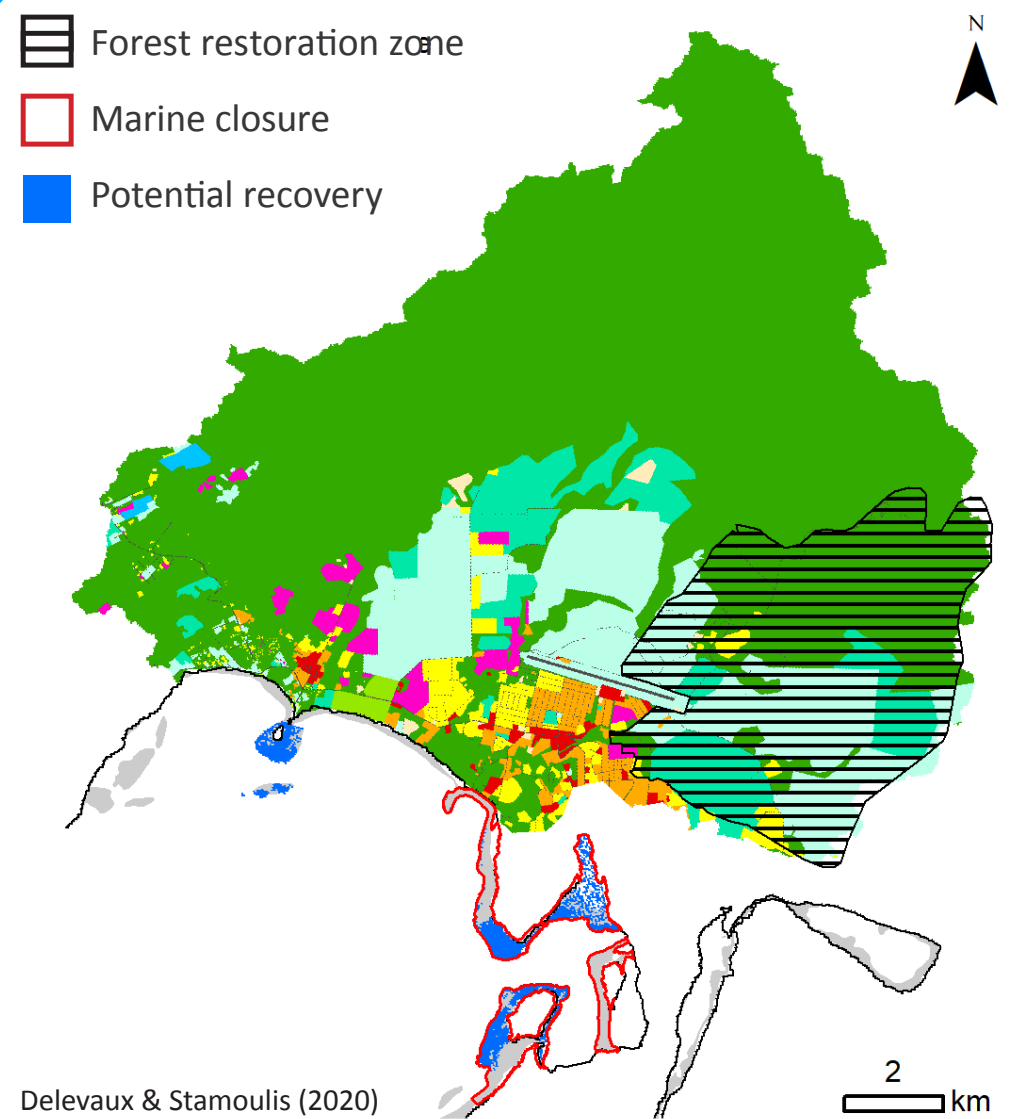
natural capital PROJECT

InVEST SEDIMENT MODEL + PLUME MODEL

PREDICTIVE CORAL REEF MODELS

OUTPUTS: DISTRIBUTION MAPS

- Forest restoration zone
- Marine closure
- Potential recovery



Restore Native Forest
+1,330 ha

+

Restore/protect marine habitat
Up to 75 ha

=

Decreased 210 ton/yr of sediment

Restore/protect fish biomass
Up to 8.3 ton